

ORTAC METAL CABLE GLANDS SERIES



METAL CABLE GLANDS SPIRAL TYPE BRASS

TECHNICAL DETAILS

Material

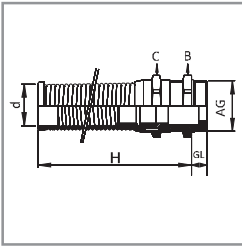
Cap nut	: Brass with nickel plated
Spiral top	: Stainless steel (1.4310/AISI302)
Clamping insert	: Polyamide PA6 V2
Sealing ring	: TPV
Gland body	: Brass with nickel plated
O-ring	: NBR
Connection thread	: Metric (EN60423)/PG (DIN 40430)
Certificates	: ROHS, CE, PT, TUV, TURK LOYDU
Protection class	: IP68
Temperature range	: -20 °C + 100 °C -40 °C + 150 °C

Properties

With spiral top for bend protection
For highly movable flexible cables
Easy to assemble
High strain relief

SPİRAL UÇLU ETANJ PİRİNÇ RAKOR

Hammaddesi	: Pirinç, nikel kaplı
Spiral yay hammaddesi	: Paslanmaz çelik (1.4310/AISI302)
Kablo tutucu	: Polyamid PA6 V2
Bağlantı dişi M	: EN 60423
Bağlantı dişi PG	: DIN 40430
Koruma sınıfı	: IP68
Isiya direnci	: -20 °C + 100 °C -40 °C + 150 °C
Conta	: Termoplastik vulkanize TPV
O-ring	: Nitril kauçuk



METRIC/PG THREAD CABLE GLANDS

AG Thread	Code	H mm	GL mm	d mm	B mm	C mm	Ø4 mm
M 12 x 1,5	STCG 01	55	6	6,8	14	14	3 - 6,5
M 16 x 1,5	STCG 02	66	7	8,2	18	17	4 - 8
M 20 x 1,5	STCG 03	88	8	12,3	22	22	6 - 12
M 25 x 1,5	STCG 04	98	8	14,3	27	24	10 - 14
M 32 x 1,5	STCG 05	111	9	18,4	34	30	13 - 18

LONG THREAD METRIC SPIRAL CABLE GLANDS

M 12 x 1,5	STCGL 01	55	12	6,8	14	14	3 - 6,5
M 16 x 1,5	STCGL 02	66	12	8,2	18	17	4 - 8
M 20 x 1,5	STCGL 03	88	12	12,3	22	22	6 - 12
M 25 x 1,5	STCGL 04	98	12	14,3	27	24	10 - 14
M 32 x 1,5	STCGL 05	111	14	18,4	34	30	13 - 18

PG 7	STPG 01	55	6	6,8	14	14	3 - 6,5
PG 9	STPG 02	66	6	8,2	18	17	4 - 8
PG 11	STPG 03	77	6	10,3	20	20	5 - 10
PG 13,5	STPG 04	88	6,5	12,3	22	22	6 - 12
PG 16	STPG 05	98	6,5	14,3	24	24	10 - 14
PG 21	STPG 06	111	7	18,4	30	30	13 - 18

LONG THREAD PG SPIRAL CABLE GLANDS

PG 7	STPGL 01	55	10	6,8	14	14	3 - 6,5
PG 9	STPGL 02	66	10	8,2	17	17	4 - 8
PG 11	STPGL 03	77	10	10,3	20	20	5 - 10
PG 13,5	STPGL 04	88	10	12,3	22	22	6 - 12
PG 16	STPGL 05	98	10	14,3	24	24	10 - 14
PG 21	STPGL 06	111	12	18,4	30	30	13 - 18

PRODUCT RANGE OVERVIEW

IP 68

Halogen free